



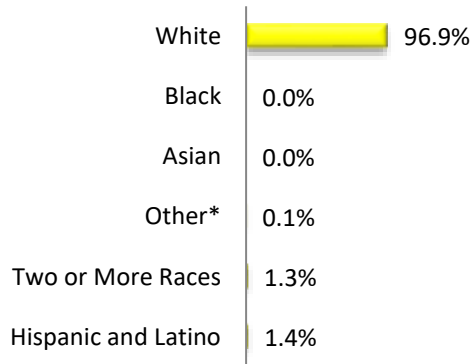
Audubon Park Boro, NJ Camden County

Year Incorporated: 1947
Municipal Type: Borough
Form of Government: Borough

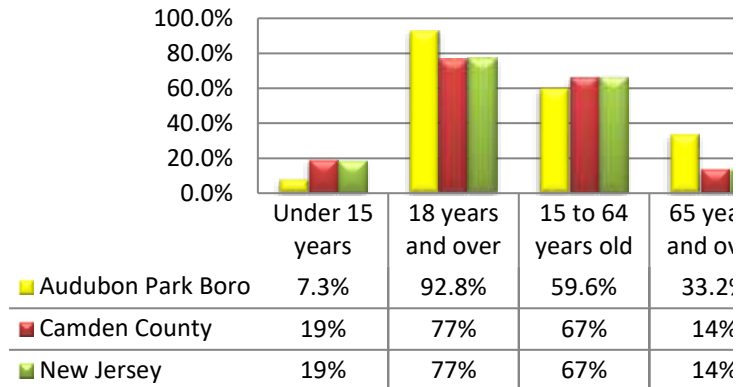
2015 Estimated Population: 1,010
Population Change 2000-2015: -8.3%
Population Density: 6,957.2 (per sq. mi.)

Demographics***

Race



Age



Dependency Ratio

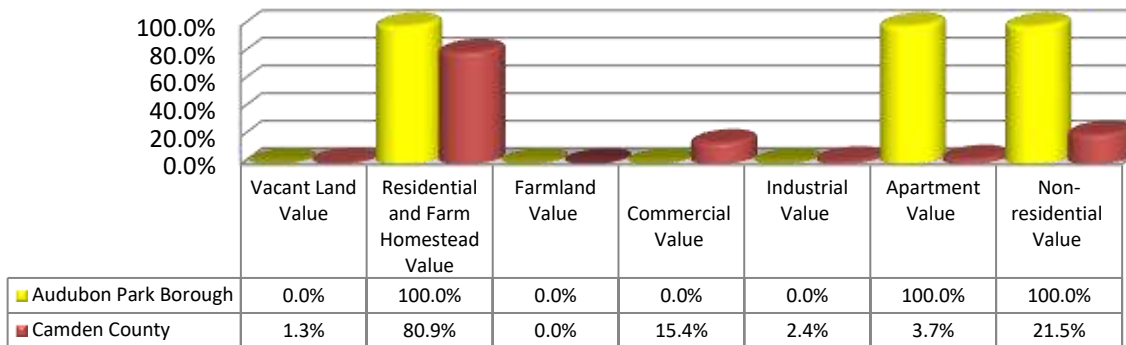
	2000	2015	% change 2000-2015
Audubon Park Boro	56.5	67.8	20.0%
Camden County	55.7	53.1	-4.5%
New Jersey	53.9	52.4	-2.7%

The dependency ratio is the ratio of dependents (people younger than 15 or older than 64), to the working age population, those 15-64.

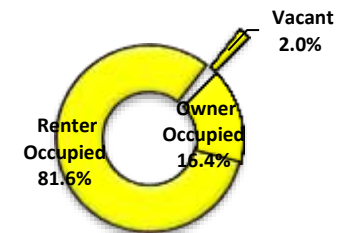
***Demographic information is from the 2015 American Community Survey and 2000 and 2010 U.S. Census.

Land Usage and Housing***

Parcel Values as a Percentage of Total Value



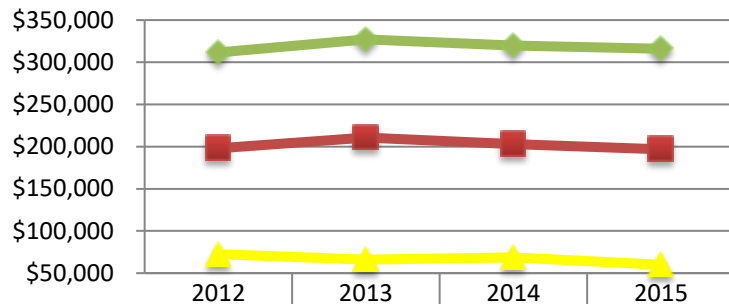
Housing Occupancy



	Owner	Renter	Vacant
Audubon Park Boro	16.4%	81.6%	2.0%
Camden County	61.1%	29.4%	9.6%
New Jersey	57.5%	31.7%	10.9%

***2016 Land use and property tax data is from the NJ Department of Community Affairs.

Median Housing Prices(in current dollars)

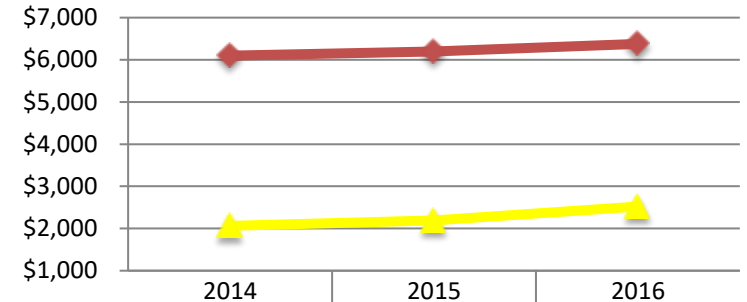


◆ Audubon Park Boro	\$72,500	\$65,900	\$68,600	\$60,000
■ Camden County	\$197,900	\$210,700	\$202,900	\$196,800
◆ NJ	\$311,600	\$327,100	\$319,900	\$315,900

% change 2012-2015

Audubon Park Boro: -17.2 Camden County: -0.6 NJ: 1.4

Average Property Tax



◆ Audubon Park Boro	\$2,064	\$2,192	\$2,521
◆ Camden County	\$6,099	\$6,199	\$6,377

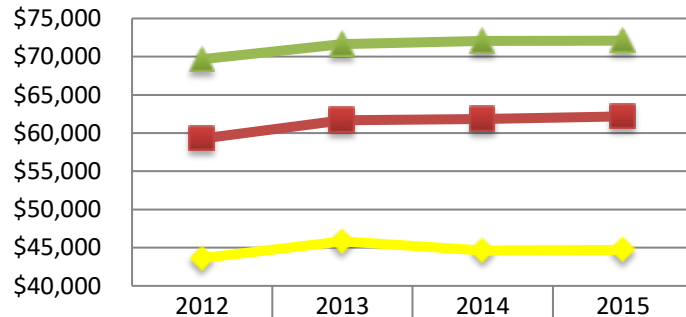
% change 2014-2016

Audubon Park Boro: 22.17 Camden County: 4.57

***Housing occupancy and prices are from the 2015 American Community Survey. Average property tax is from the New Jersey's Department of Community Affairs's website.

Economic Indicators***

Median Household Income

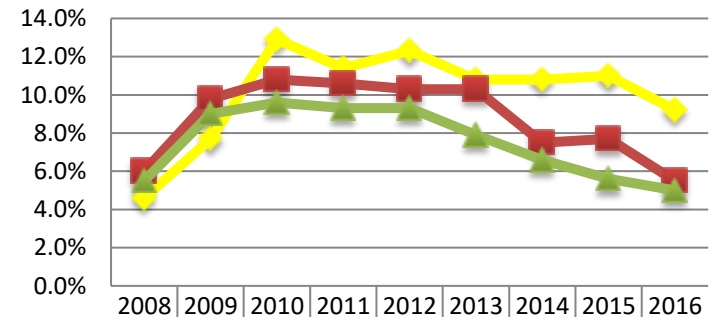


◆ Audubon Park Boro	\$43,625	\$45,833	\$44,643	\$44,722
■ Camden County	\$59,280	\$61,683	\$61,842	\$62,185
◆ NJ	\$69,667	\$71,629	\$72,062	\$72,093

% change 2012-2015

Audubon Park Boro: 2.5 Camden County: 4.9 NJ: 3.5

Unemployment Rate



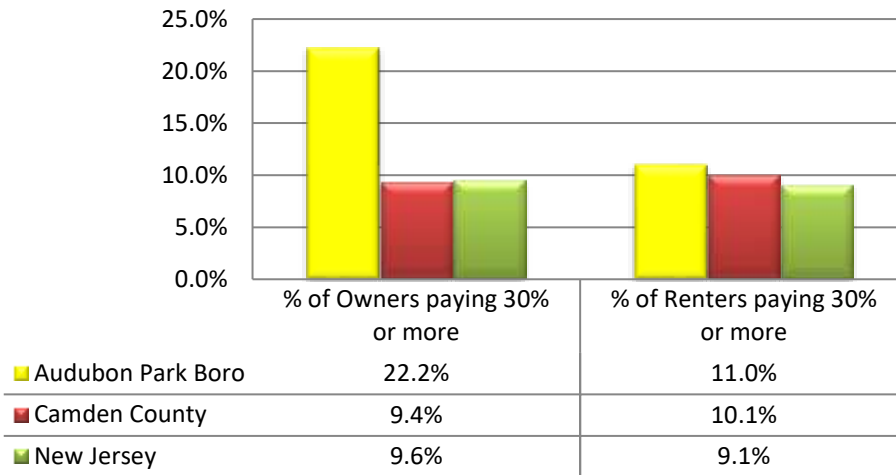
◆ Audubon Park Boro	4.6%	7.7%	12.9%	11.4%	12.3%	10.8%	10.8%	11.0%	9.2%
■ Camden County	6.0%	9.8%	10.8%	10.6%	10.3%	10.3%	7.5%	7.7%	5.5%
◆ NJ	5.5%	9.0%	9.6%	9.3%	9.3%	7.9%	6.6%	5.6%	5.0%

% change 2014-2016

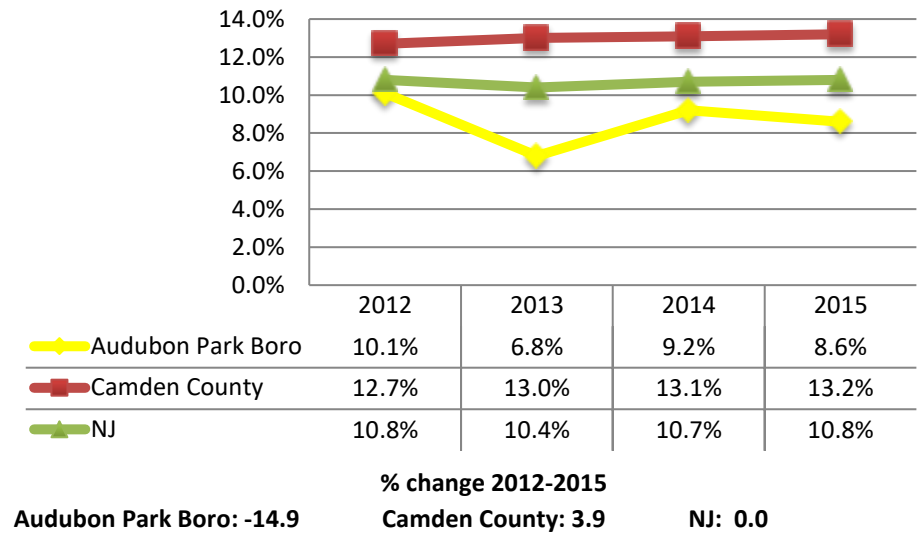
Audubon Park Boro: -14.8 Camden County: -26.7 NJ: -24.2

***Household income data is from the 2015 American Community Survey. The unemployment rates are from the NJ Department of Labor and Workforce Development.

% of Home Owners and Renters Paying more than 30% of their Income on Housing

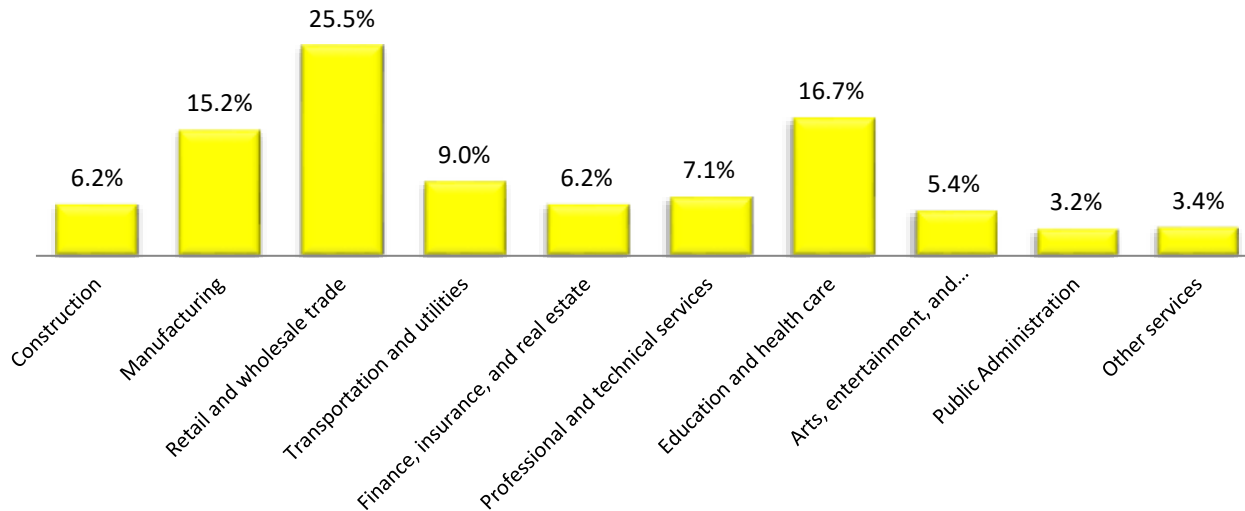


Poverty Rate

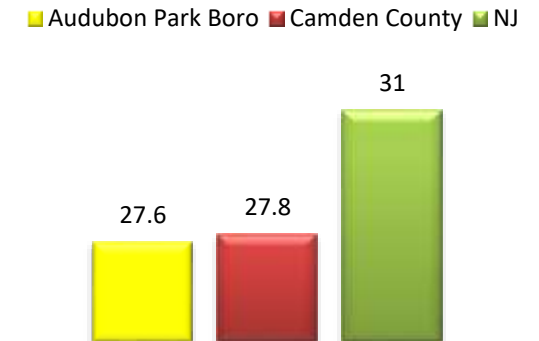


***Housing affordability and poverty rates are from the 2015 American Community Survey.

Percentage of Audubon Park Boro Workforce Employed by Sector*



Mean Travel Time to Work (Mins.)



Modes of Transportation to Work

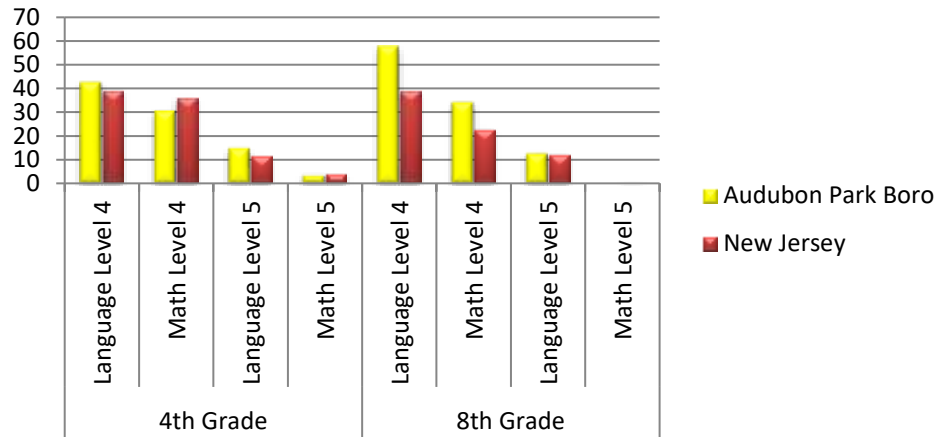
Modes of Transportation to Work	%
Drove Alone	83.4
Carpooled	4.5
Public Transportation	6.5
Work from Home	2.6
Walked	0.9
Other Means	1.1

*Arts, Entertainment and Accommodations. Also this data is the sectors in which residents work in, and not the percentage of sector jobs in the Municipality.

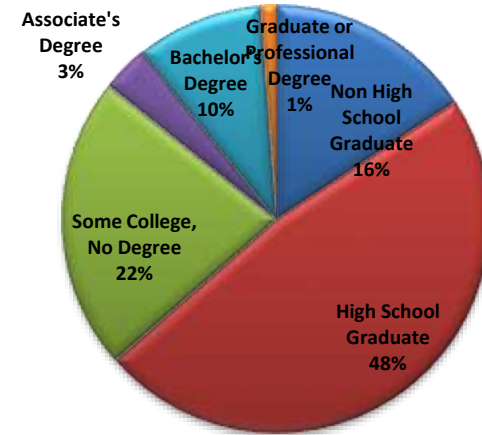
***Workforce and commute data is from the 2015 America Community Survey. Travel time to work is from the 2015 American Community Survey.

Education***

PARCC 4th and 8th Grade: Percentage of Students Meeting (Level 4) or Exceeding (Level 5) Expectations



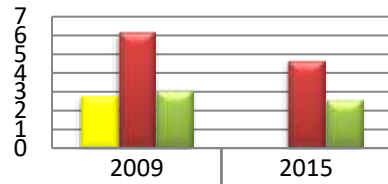
Highest Level of Education Attainment: People 25 years and over



***2015 PARCC data is from the NJ Department of Education website and the education attainment level is from the 2015 American Community Survey.

Crime***

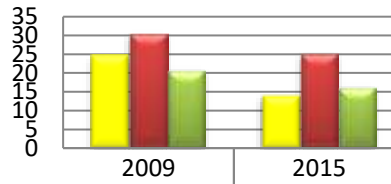
Violent Crime Rate



Violent Crime Rate

Audubon Park Boro	2.8	0
Camden County	6.2	4.7
NJ	3.1	2.6

Nonviolent Crime Rate



Nonviolent Crime Rate

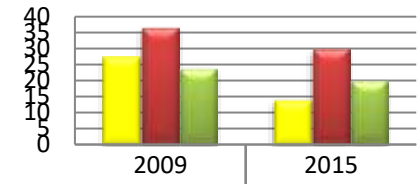
Audubon Park Boro	24.6	13.8
Camden County	30.6	25.4
NJ	20.8	16.3

% Change 2009-2015

Audubon Park Boro	-100.0%
Camden County	-24.2%
NJ	-16.1%

Audubon Park Boro	-43.9%
Camden County	-17.0%
NJ	-21.6%

Total Crime Rate



Total Crime Rate

Audubon Park Boro	27.4	13.8
Camden County	36.8	30.1
NJ	23.9	20.2

Audubon Park Boro	-49.6%
Camden County	-18.2%
NJ	-15.5%

***The crime data is from the FBI Uniform Crime Report