



Chesterfield, NJ

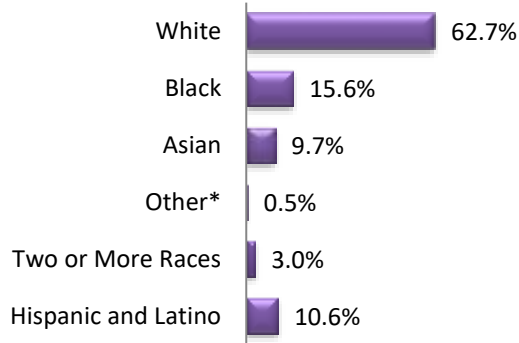
Burlington County

Year Incorporated: 1798
 Municipality Type: Township
 Form of Government: Township

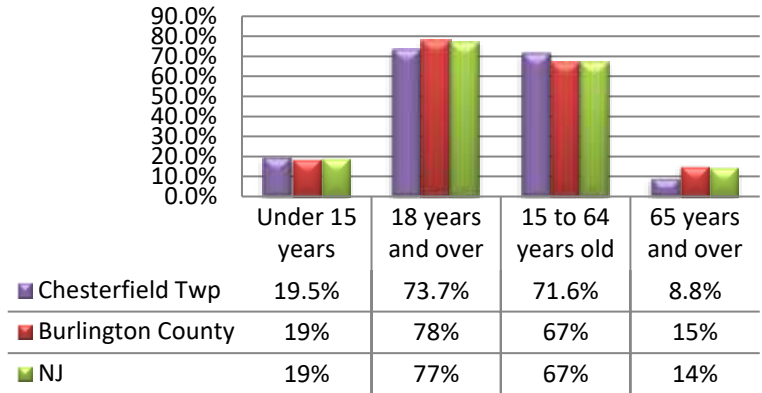
2015 Estimated Population: 7,704
 Population Change 2000-2015: 29.4%
 Population Density: 361.1 (per sq. mi.)

Demographics***

Race



Age



Dependency Ratio

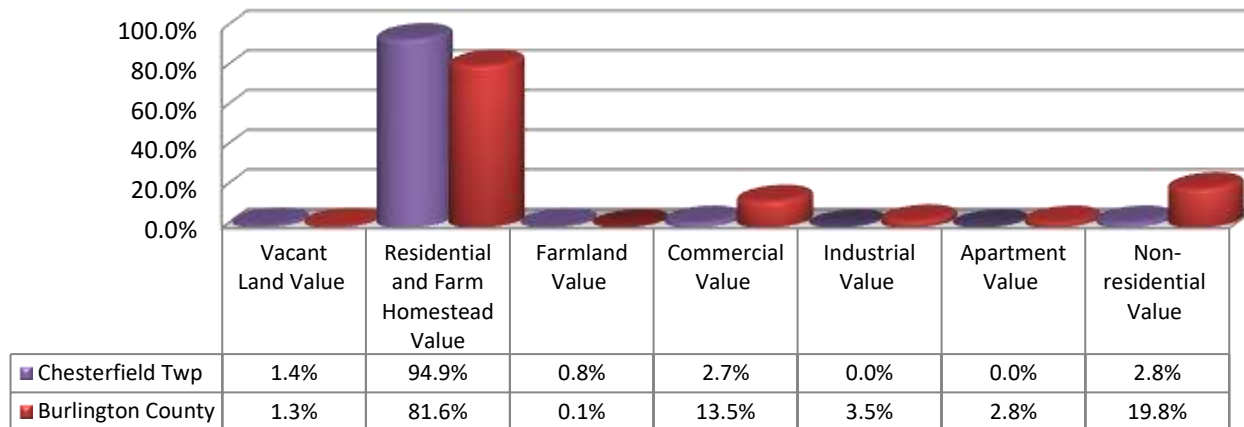
	2000	2015	% change 2000-2015
Chesterfield	17.1	41.9	145.0%
Burlington County	52.5	52.4	-0.2%
New Jersey	53.9	52.4	-2.7%

The dependency ratio is the ratio of dependents (people younger than 15 or older than 64), to the working age population, those 15-64.

***Demographic information is from the 2015 American Community Survey and 2000 and 2010 US Census.

Land Usage and Housing***

Parcel Values as a Percentage of Total Value



Housing Occupancy



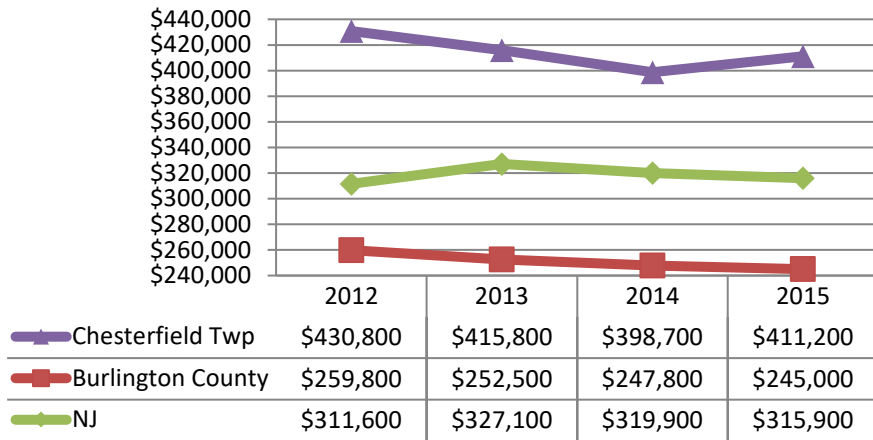
	Owner	Renter	Vacant
Chesterfield	87.9%	8.2%	3.9%
Burlington County	71.1%	21.9%	7.0%
New Jersey	57.5%	31.7%	10.9%

***2016 Land use and property tax data is from the NJ Department of Community Affairs.

Municipal Profiles were prepared by the Senator Walter Rand Institute for Public Affairs at Rutgers University-Camden



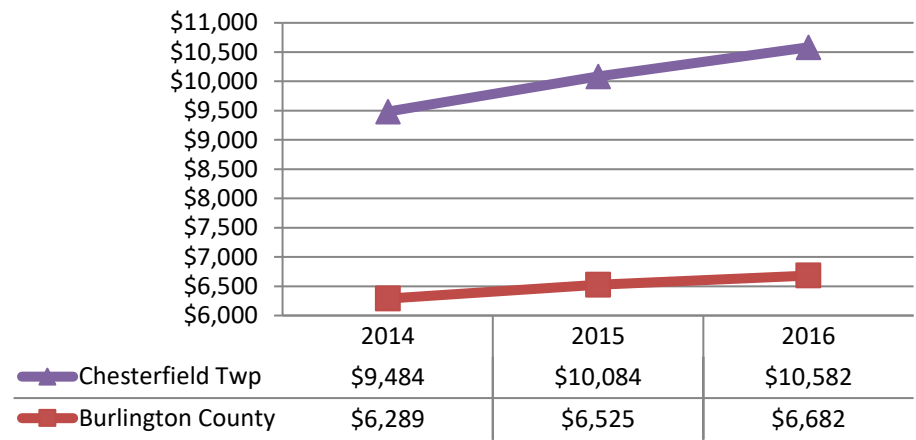
Median Housing Prices(in current dollars)



% change 2012-2015

Chesterfield: -4.5 Burlington County: -5.7 NJ: 1.4

Average Property Tax



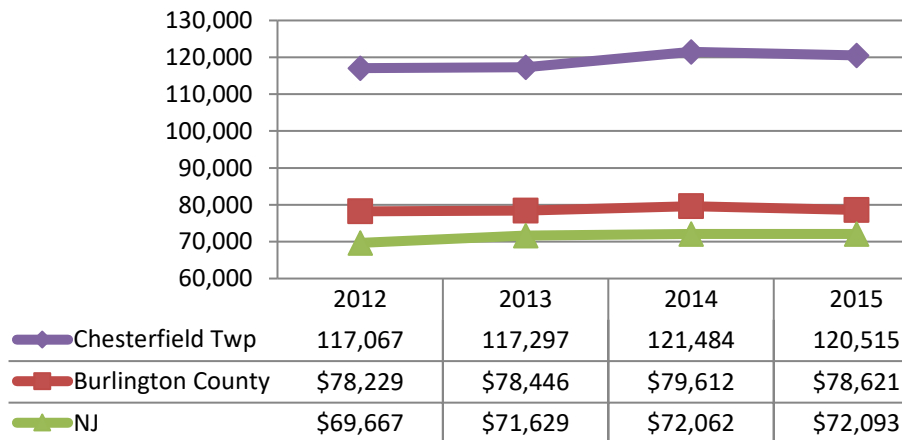
% change 2014-2016

Chesterfield Twp: 11.6 Burlington County: 6.3

***Housing occupancy and prices are from the 2015 American Community Survey. Average property tax is from the New Jersey's Department of Community Affairs's website.

Economic Indicators***

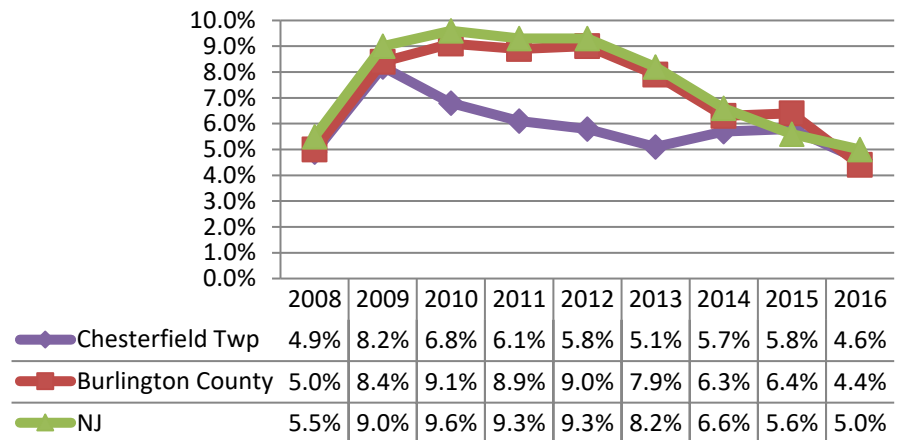
Median Household Income



% change 2012-2015

Chesterfield: 2.9 Burlington County: 0.5 NJ: 3.5

Unemployment Rate



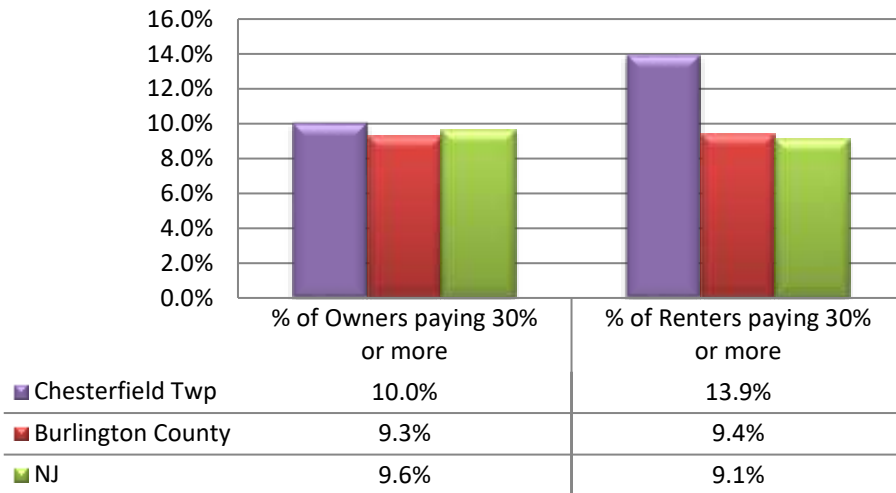
% change 2014-2016

Chesterfield: -19.3 Burlington County: -30.2 NJ: -24.2

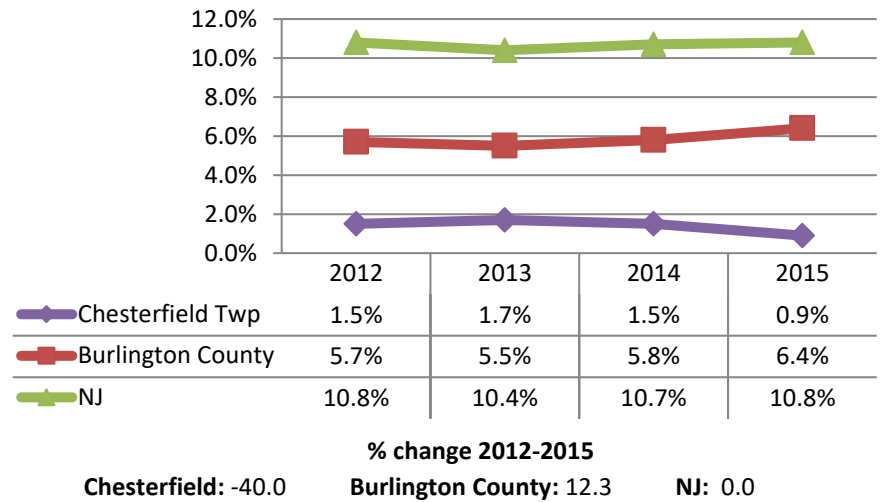
***Household income data is from the 2015 American Community Survey. The unemployment rates are from the NJ Department of Labor and Workforce Development.

Municipal Profiles were prepared by the Senator Walter Rand Institute for Public Affairs at Rutgers University-Camden

% of Home Owners and Renters Paying more than 30% of their Income on Housing

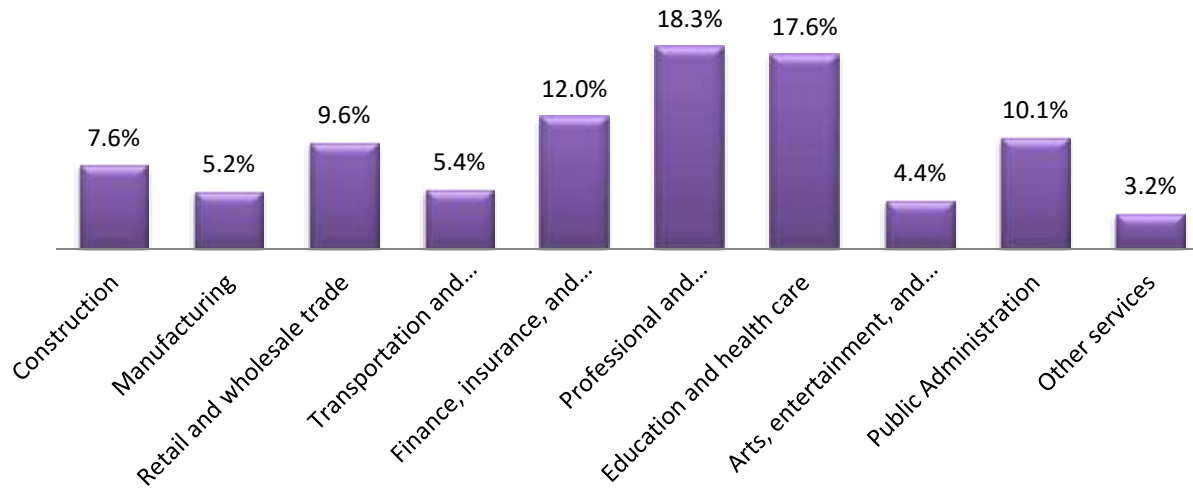


Poverty Rate

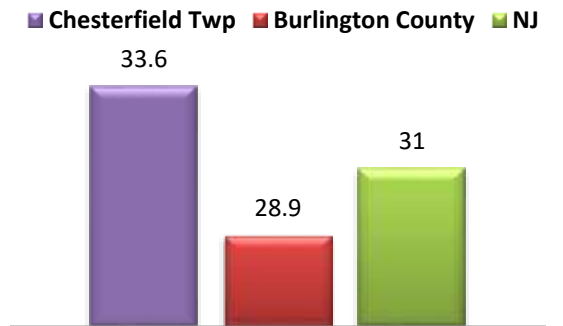


***Housing affordability and poverty rates are from the 2015 American Community Survey.

Percentage of Chesterfield Workforce Employed by Sector*



Mean Travel Time to Work (Mins.)



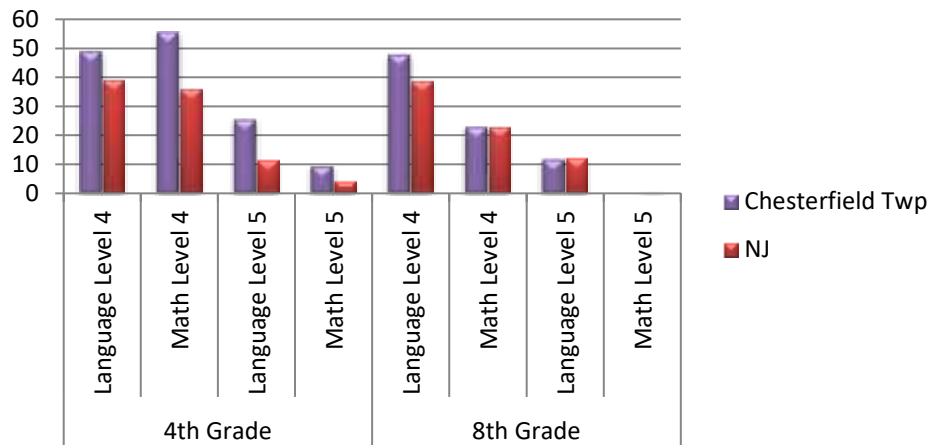
Modes of Transportation to Work	%
Drove Alone	81.2
Carpooled	3.5
Public Transportation	5.4
Work from Home	8.1
Walked	1.5
Other Means	0.4

*Arts, Entertainment and Accommodations. Also this data is the sectors in which residents work in, and not the percentage of sector jobs in the Municipality.

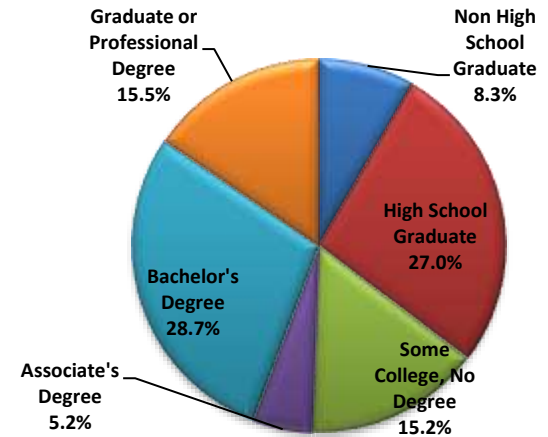
***Workforce and commute data is from the 2015 America Community Survey. Travel time to work is from the 2015 American Community Survey.

Education***

PARCC 4th and 8th Grade: Percentage of Students Meeting (Level 4) or Exceeding (Level 5) Expectations



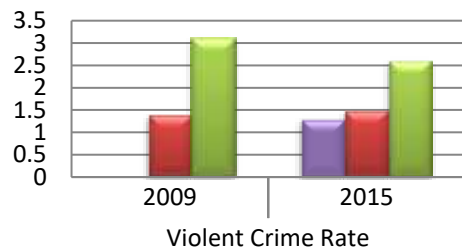
Highest Level of Education Attainment: People 25 years and over



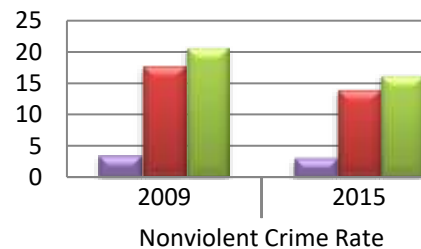
***2015 PARCC data is from the NJ Department of Education website and the education attainment level is from the 2015 American Community Survey.

Crime***

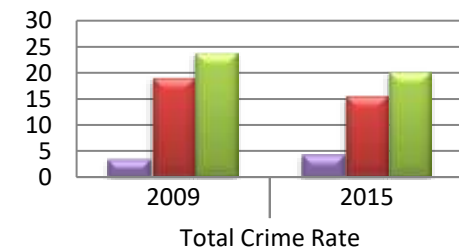
Violent Crime Rate



Nonviolent Crime Rate



Total Crime Rate



% Change 2009-2015

Chesterfield Twp	
Burlington County	7.1%
NJ	-16.1%

Chesterfield Twp	-11.8%
Burlington County	-20.8%
NJ	-21.6%

Chesterfield Twp	26.5%
Burlington County	-18.8%
NJ	-15.5%

***The crime data is from the FBI Uniform Crime Report

Municipal Profiles were prepared by the Senator Walter Rand Institute for Public Affairs at Rutgers University-Camden