



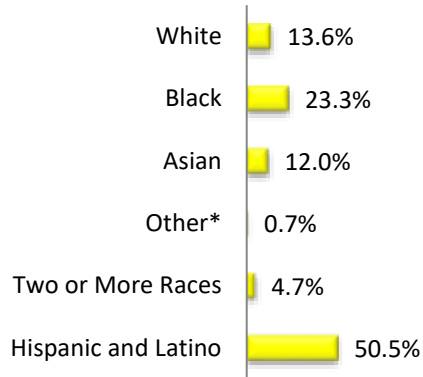
# Woodlynne Boro, NJ Camden County

Year Incorporated: 1901  
Municipal Type: Borough  
Form of Government: Borough

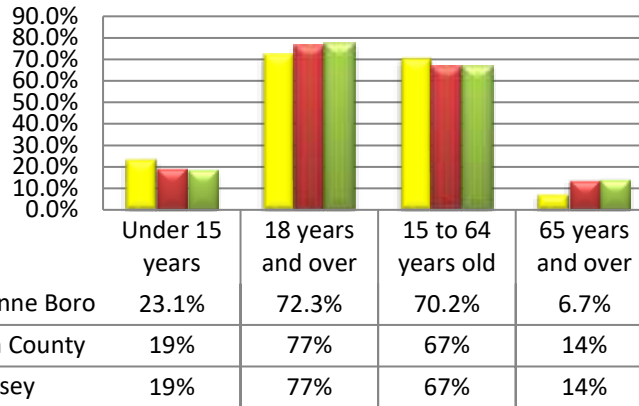
2015 Estimated Population: 2,970  
Population Change 2000-2015: 6.2%  
Population Density: 13,563.9 (per sq. mi.)

## Demographics\*\*\*

### Race



### Age



### Dependency Ratio

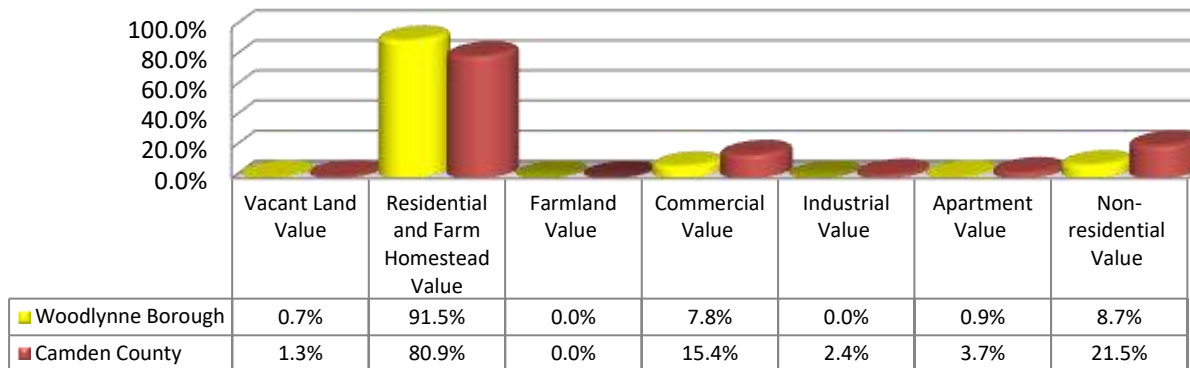
	2000	2015	% change 2000-2015
Woodlynne Boro	59.5	46.2	-22.3%
Camden County	55.7	53.1	-4.5%
New Jersey	53.9	52.4	-2.7%

The dependency ratio is the ratio of dependents (people younger than 15 or older than 64), to the working age population, those 15-64.

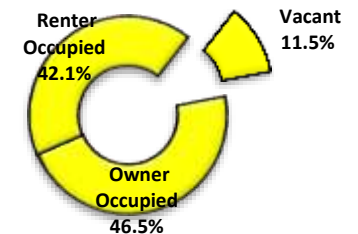
\*\*\*Demographic information is from the 2015 American Community Survey and 2000 and 2010 US Census.

## Land Usage and Housing\*\*\*

### Parcel Values as a Percentage of Total Value



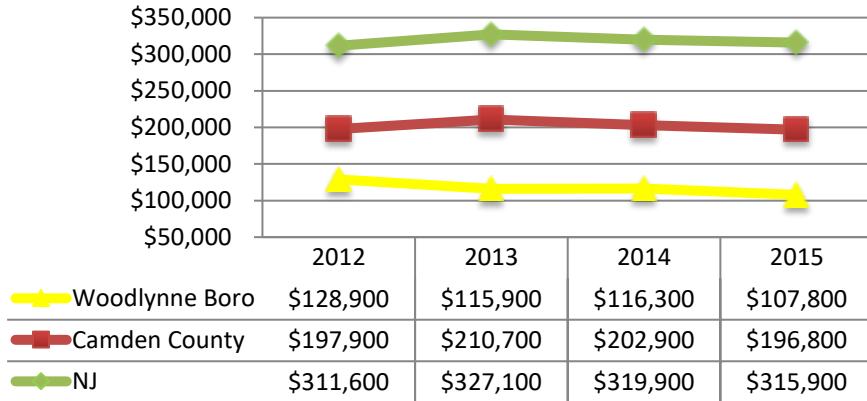
### Housing Occupancy



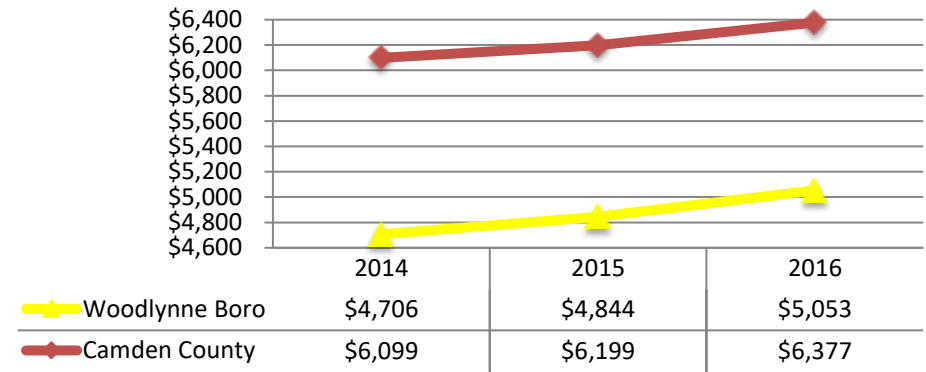
	Owner	Renter	Vacant
Woodlynne Boro	46.5%	42.1%	11.5%
Camden County	61.1%	29.4%	9.6%
New Jersey	57.5%	31.7%	10.9%

\*\*\*2016 Land use and property tax data is from the NJ Department of Community Affairs.

### Median Housing Prices(in current dollars)



### Average Property Tax



#### % change 2012-2015

Woodlynne Boro: -16.4      Camden County: -0.6      NJ: 1.4

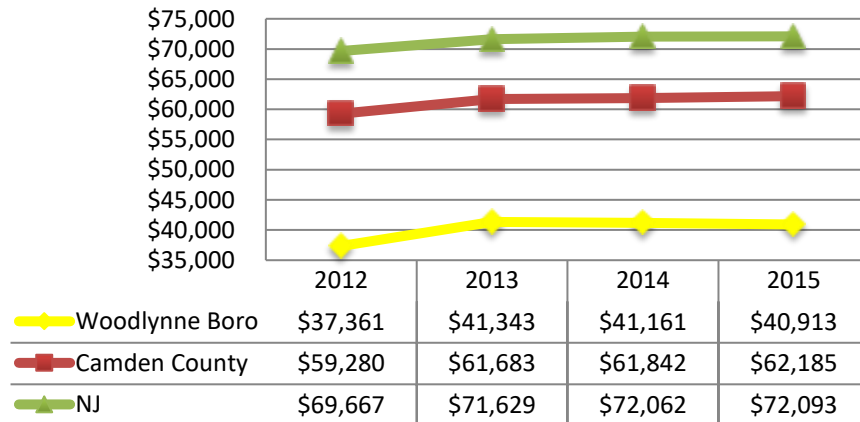
#### % change 2014-2016

Woodlynne Boro: 7.36      Camden County: 4.57

\*\*\*Housing occupancy and prices are from the 2015 American Community Survey. Average property tax is from the New Jersey's Department of Community Affairs's website.

## Economic Indicators\*\*\*

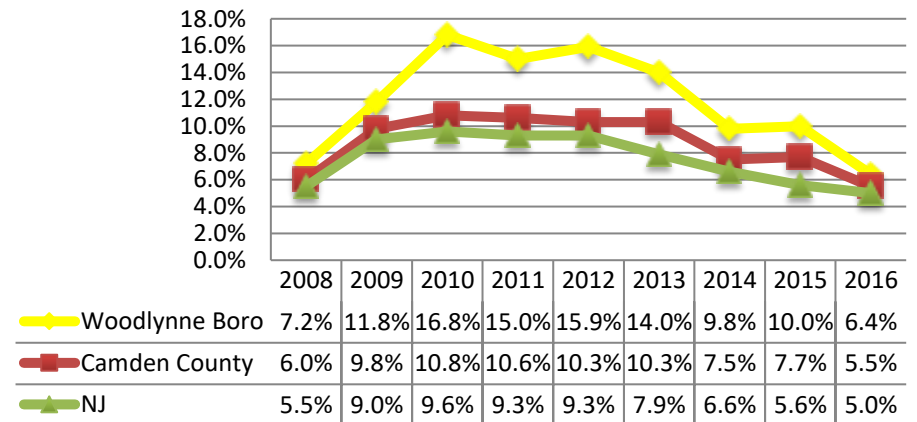
### Median Household Income



#### % change 2012-2015

Woodlynne Boro: 9.5      Camden County: 4.9      NJ: 3.5

### Unemployment Rate

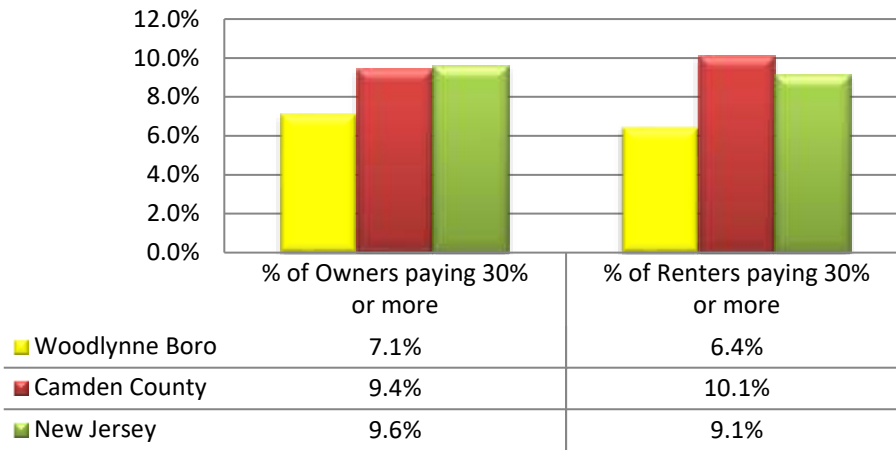


#### % change 2014-2016

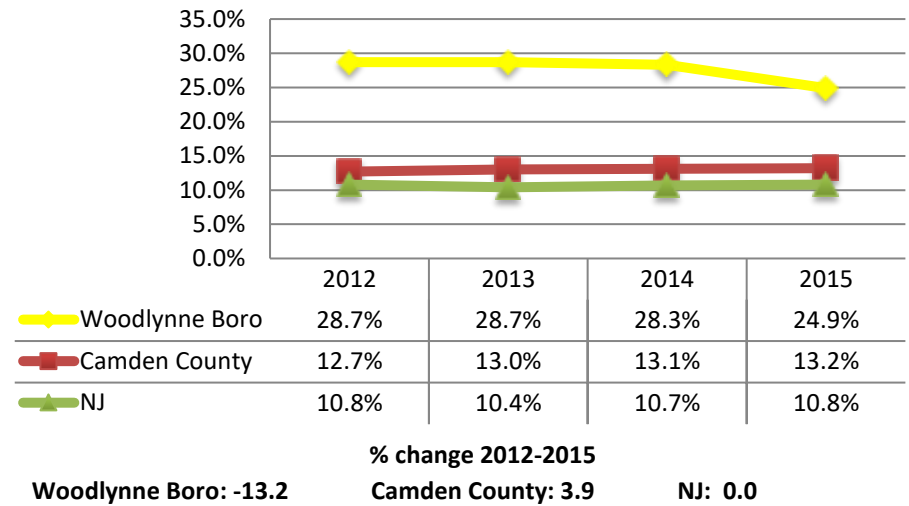
Woodlynne Boro: -34.7      Camden County: -26.7      NJ: -24.2

\*\*\*Household income data is from the 2015 American Community Survey. The unemployment rates are from the NJ Department of Labor and Workforce Development.

### % of Home Owners and Renters Paying more than 30% of their Income on Housing

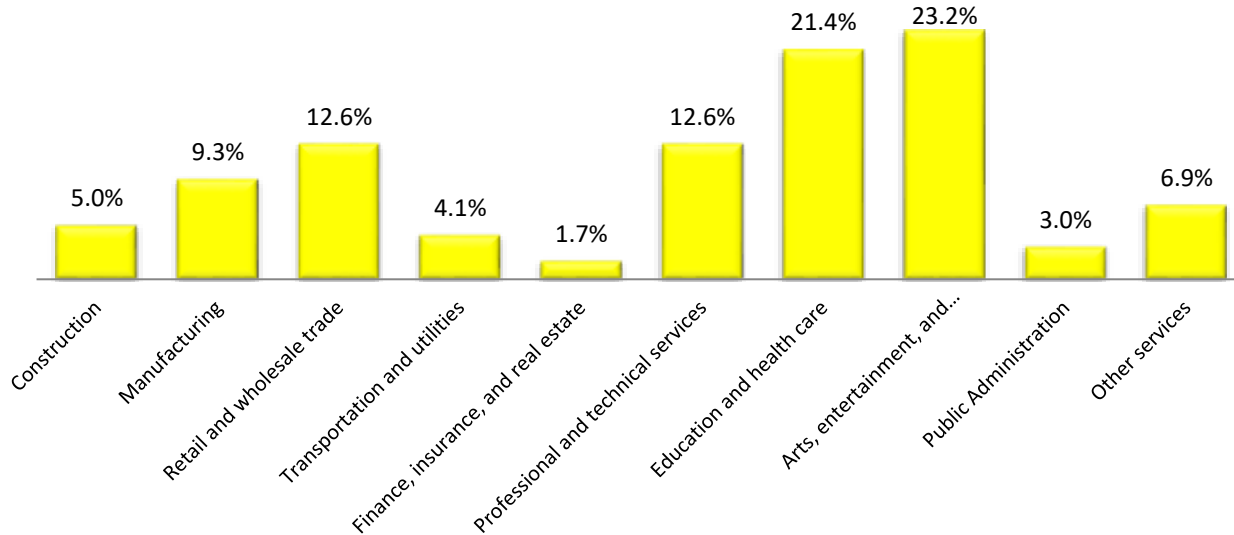


### Poverty Rate

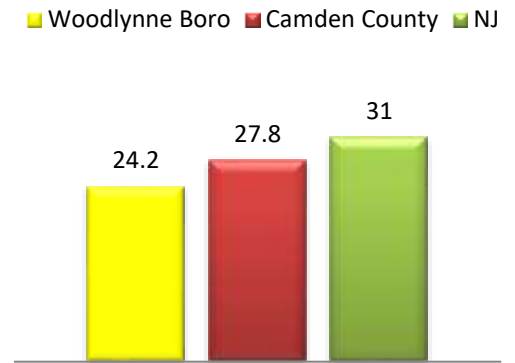


\*\*\*Housing affordability and poverty rates are from the 2015 American Community Survey.

### Percentage of Woodlynne Boro Workforce Employed by Sector\*



### Mean Travel Time to Work (Mins.)



### Modes of Transportation to Work

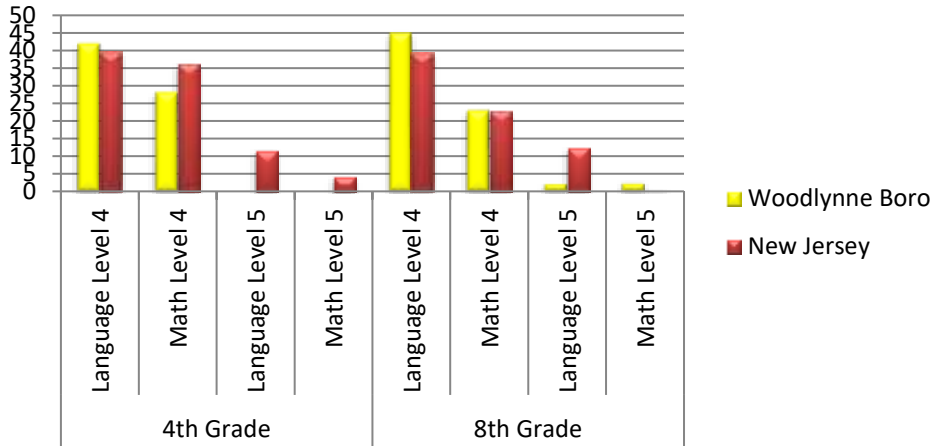
Modes of Transportation to Work	%
Drove Alone	63.3
Carpooled	14.2
Public Transportation	16.3
Work from Home	0.6
Walked	2.4
Other Means	2.6

\*Arts, Entertainment and Accommodations. Also this data is the sectors in which residents work in, and not the percentage of sector jobs in the Municipality.

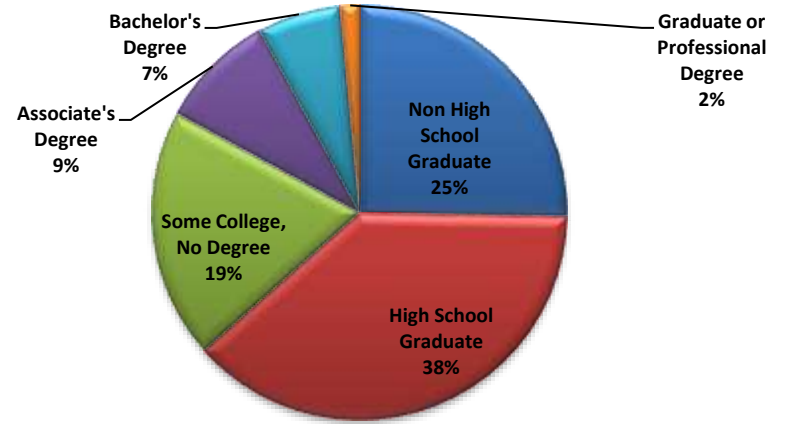
\*\*\*Workforce and commute data is from the America Community Survey. Travel time to work is from the 2015 American Community Survey.

# Education\*\*\*

PARCC 4th and 8th Grade: Percentage of Students Meeting (Level 4) or Exceeding (Level 5) Expectations



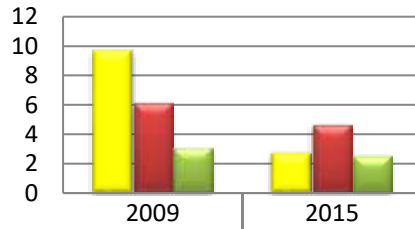
Highest Level of Education Attainment: People 25 years and over



\*\*\*2015 PARCC data is from the NJ Department of Education website and the education attainment level is from the 2015 American Community Survey.

# Crime\*\*\*

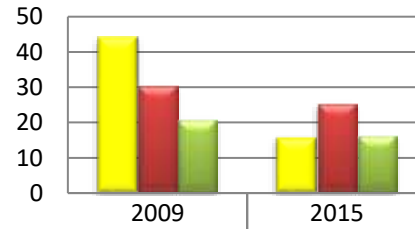
Violent Crime Rate



Violent Crime Rate

Woodlynne Boro	9.7	2.7
Camden County	6.2	4.7
NJ	3.1	2.6

Nonviolent Crime Rate



Nonviolent Crime Rate

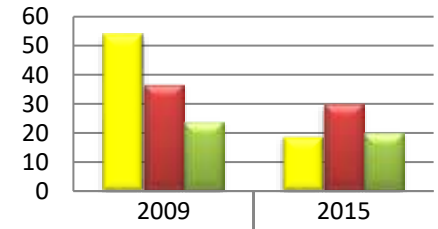
Woodlynne Boro	44.3	15.6
Camden County	30.6	25.4
NJ	20.8	16.3

% Change 2009-2015

Woodlynne Boro	-72.2%
Camden County	-24.2%
NJ	-16.1%

Woodlynne Boro	-64.8%
Camden County	-17.0%
NJ	-21.6%

Total Crime Rate



Total Crime Rate

Woodlynne Boro	54	18.3
Camden County	36.8	30.1
NJ	23.9	20.2

Woodlynne Boro	-66.1%
Camden County	-18.2%
NJ	-15.5%

\*\*\*The crime data is from the FBI Uniform Crime Report

Municipal Profiles were prepared by the Senator Walter Rand Institute for Public Affairs at Rutgers University-Camden